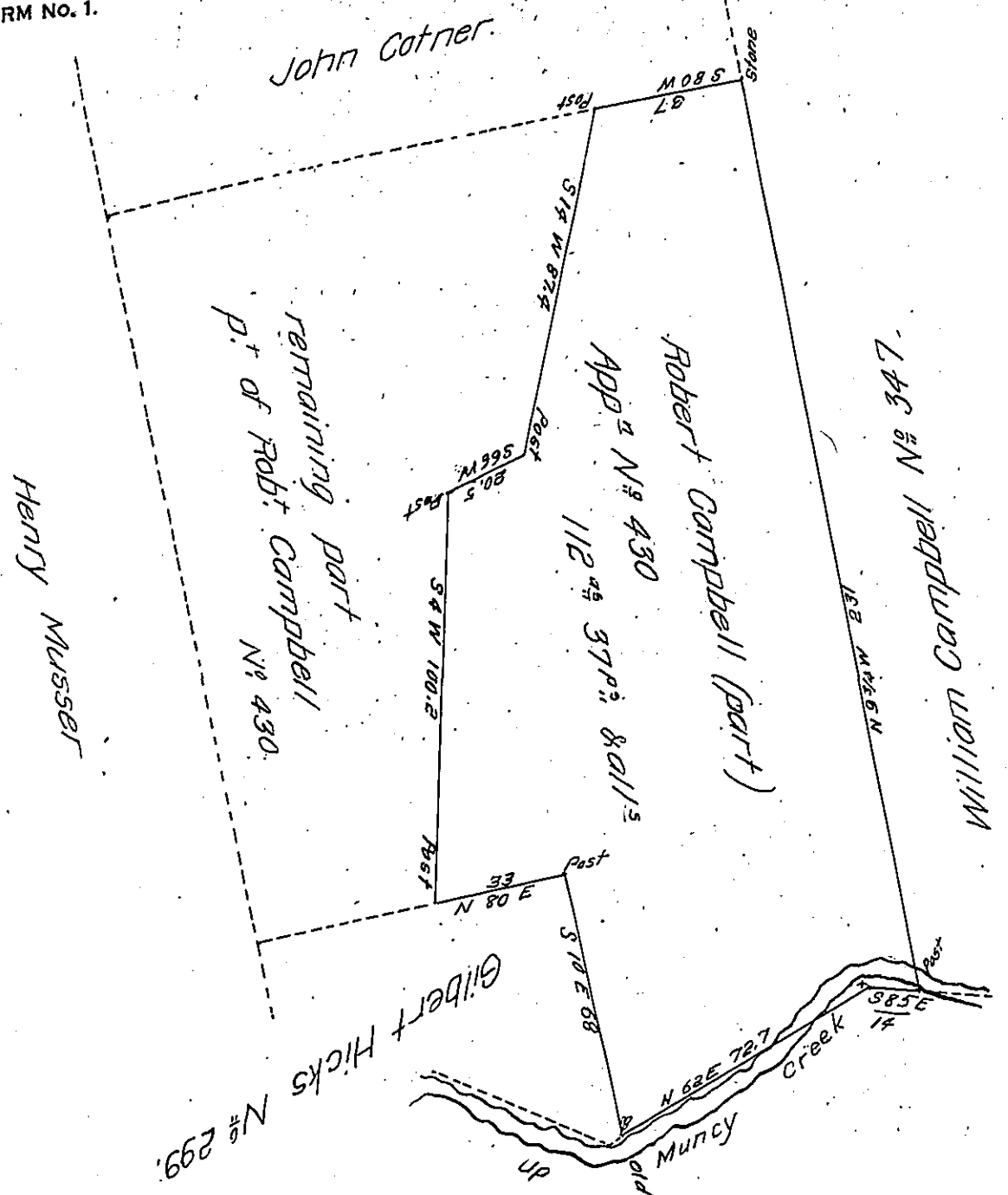


FORM NO. 1.



Situate in Muncy Creek Township Lycoming County on the west side of Muncy Creek. Surveyed 14<sup>th</sup> April 1845 for Patenting that part of the above tract included in the black lines - Containing one hundred & twelve acres & thirty seven perches with allowance of six per Centum for Roads &c. being part of a tract of land originally Surveyed to Robert Campbell on the 1<sup>st</sup> of April 1799 on Application N<sup>o</sup> 430 dated 3<sup>d</sup> April 1769.

To Jacob Sallade Esquire

Surveyor General.

Alexander H. McHenry D.S.

IN TESTIMONY that the above is a copy of the original remaining on file in the Department of Internal Affairs of Pennsylvania, made conformably to an Act of Assembly approved the 16th day of February 1833, I have hereunto set my hand and caused the Seal of said Department to be affixed at Harrisburg, this Twentieth day of April 1907

*Alexander H. McHenry*  
Secretary of Internal Affairs.